

Integrated Rebar Scanner

Applications

Test the location, distribution, direction, and diameter of rebars as well as the thickness of the concrete cover in concrete structures such as bridges, tunnels, walls etc.

Detect magnetic structures in a non-magnetic media.


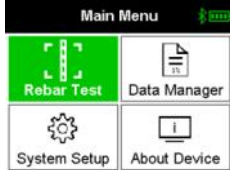

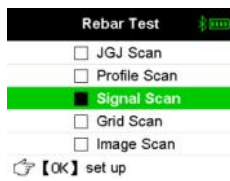
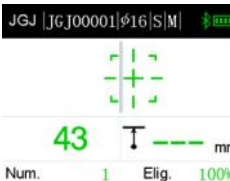
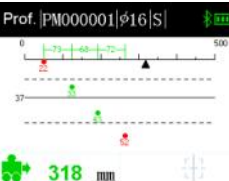
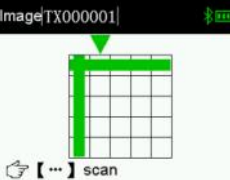

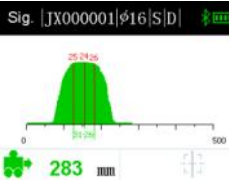
Evaluate the quality of construction.

Verify the integrity and the durability of existing structures.

Count the number of rebars on older structures.



Unit Software

| | | |
|---|---|---|
|  |  |  |
| <p>Boot interface</p> | <p>Main menu</p> | <p>Data view</p> |
|  |  |  |
| <p>Rebar test</p> | <p>JGJ scan</p> | <p>Profile scan</p> |
|  |  |  |
| <p>Image scan</p> | <p>Grid scan</p> | <p>Signal scan</p> |

Outstanding Features

- Quick and easy operation.
- The location and spacing of rebars, as well as the thickness of the protective layer appear on the 3.5 inch color LCD screen that is clearly visible even in bright outdoor environments.
- Multi-coil design, faster speed, higher accuracy, better resolution.
- A three-dimensional imaging function to reproduce how steel is distributed.

Integrated Rebar Scanner

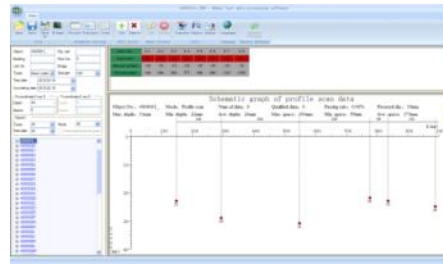
Technical Specifications

| | |
|---|---|
| Protective Layer Thickness Range (mm) | 6-50 |
| Max Range (mm) | First Range 2-100, Second Range 2-200 |
| Max Error for Protective Layer (mm) | ± 1 (mm), 2-60 / ± 2 (mm), 61-80 / ± 3 (mm), 81-90 / ± 4 (mm), 91-133 / ± 5 (mm), 134-169 / ± 6 (mm), 170-200 |
| Applicable Range (mm) | 6-50 |
| Test Accuracy (mm) | 0.1 |
| Scans: JGJ, Precise, Profile, Grid, Picture | YES |
| 3D Imaging | YES |
| Scan Range | Borderless |
| Data Transmission | WiFi, USB |
| Screen | 320x240 color |
| Power | Built-in Rechargeable |
| Size (mm) | 240x93x110 |
| Weight | 670g |
| Probe | Integrated |

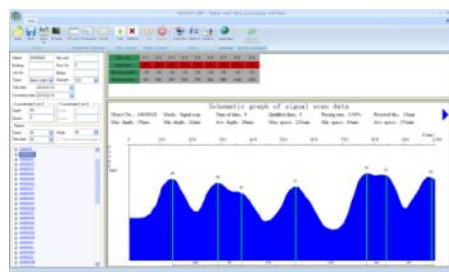
Analysis Software



Grid scan



Profile scan



Signal scan

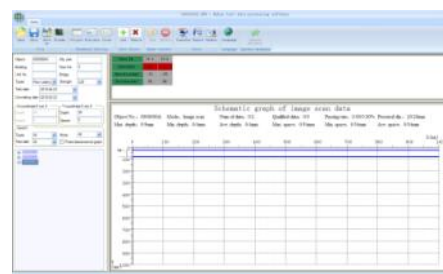


Image scan

Comercializado por:

Demeq S.R.L

Washington 3894 - Barrio de Saavedra (1430) C.A.B.A. - Argentina

Teléfono: +54 11 4542-7783

Correo Electrónico: infodemeq@demeq.com

Página Web: www.demeq.com